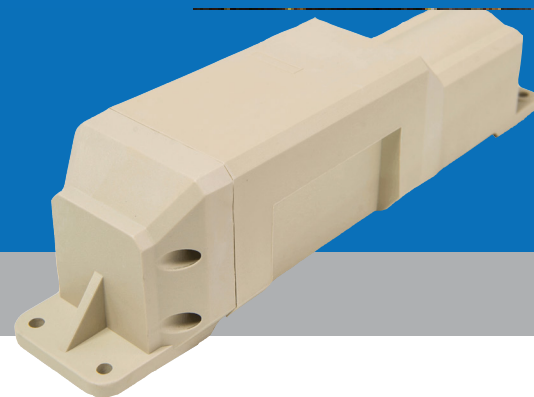




TTU-700 GPRS/CDMA/HSPA Series

7 Year non-rechargeable battery operated

Trailer Tracking Unit



EXPERIENCE THE ADVANTAGE

- GSM/GPRS, CDMA 1xRTT, or HSPA configurations
- Up to 5,000 message cycles on a charged battery pack
- 7 year battery life with a single message per day
- Superior cellular and GPS performance
- IP67 sealed and rugged enclosure
- Built-in motion sensor
- Built-in cellular and GPS antenna for easy installation

The TTU-700 is a battery operated non-rechargeable trailer tracking product designed for reliable, multi-year deployments. The TTU-700 is an ideal solution for managing assets that will be deployed for long periods without maintenance needs.

COMPETITIVE PRICE, COMPETITIVE TECHNOLOGY, COMPETITIVE EDGE

The TTU-700 high-value tracking unit from ThinAir features a small size, superior GPS performance, and an internal 57 Ah battery. The TTU-700 is a complete trailer and asset tracking and communications device incorporating next generation, super-sensitive GPS technology on GSM/GPRS, CDMA 1xRTT and HSPA cellular networks for installation on the exterior of any mobile asset. Superior internal antennas for both cellular and GPS eliminate the need for wired antennas and make the TTU-700 mountable virtually anywhere on the trailer for easy, inexpensive installations. Messages are transported across the cellular network using enhanced SMS or UDP messaging providing a reliable communications link between the device and your application servers. The TTU-700 is designed to dramatically reduce cost of ownership, power and size while providing improving field reliability.

FLEXIBILITY

The TTU-700 employs ThinAir's industry leading alert engine. The advanced engine monitors external conditions and supports customer-defined exception-based rules. ThinAir's engine continuously monitors the environment and responds instantaneously to pre-defined threshold conditions related to time, date, motion, location, geo-zone, input and other event combinations. With the advanced engine, your unique application will meet demanding customer requirements. This behavior can be programmed by ThinAir before shipment, at a customer's facility, or over-the-air once the unit has been fielded.

OVER-THE-AIR SERVICEABILITY

Configuration parameters, system rules, and firmware can all be updated over-the-air. The system offers out-of-the-box hands free configuration and automatic post-installation upgrades. It can also monitor unit health status across your customers' fleets to quickly identify issues before they become expensive problems.

TTU-700 SPECIFICATIONS

GENERAL

Communication Modes	GPRS/EDGE/HSPA and CDMA 1xRTT packet data, UDP and SMS
Location Technology	50 Channel GPS
Operating Voltage	3.6 V internal battery pack

GPS

Location Technology	GPS
Enhancement Technology	SBAS: WASS, EGNOS, MSAS, GAGAN
Tracking Sensitivity	-162 dBm
Acquisition Sensitivity	-147 dBm
Location Accuracy	2.0m
AGPS / Location assistance capable	

CELLULAR

Data Support	SMS, GPRS, CDMA 1XRTT or HSPA packet data
Operating Bands (MHz)	
GSM/GPRS	850/900/1800/1900
CDMA/1xRTT	850/1800
HSPA/UMTS	800(VI)/850(V)/900(VIII)/1700(IV)/1900(II)/ 2100(I)
Transmitter Power	
GSM/1xRTT	850/900/1800/1900
CDMA/1xRTT	850/1800
HSPA/UMTS	(all bands)
HSPA Data Rates	5.6 Mbps upload / 7.2 Mbps download
HSPA Fallback	EDGE/GPRS/GSM quad band EDGE MCS1-MCS9 3GPP Release 6

CERTIFICATIONS

Fully certified FCC, CE, IC, PTCRB, Applicable Carriers

DEVELOPMENT SUPPORT OPTIONS

Customized hardware and software development available on request

About ThinAir

ThinAir Telematics, based in Houston, Texas, is the premier provider of fleet management and GPS tracking solutions for any size business. Our solutions offer real-time insight into mobile and fixed assets to reduce operational costs and improve customer service, safety, and security. Our intuitive web-based and mobile applications empower users to quickly adopt and realize rapid ROI. For more information, please visit www.thinair.co

ENVIRONMENTAL

Temperature	-30° to + 75°C (operating) tethered -40° to + 85°C (storage)
Humidity	95% R.H. @ 50°C non-condensing
Shock and Vibration	U.S. Military Standard 202G and 801G, SAE J1455
EMC/EMI	SAE J1113
RoHS Compliant	

ELECTRICAL

Operating Voltage	3.6 internal battery
Power Consumption	<100 µA @ 12V (deep sleep) 70 mA @ 12V (active standby)

PHYSICAL

Dimensions	2.25" x 2.25" x 10.5" (55 x 55 x 260mm)
Weight	32oz (907g)

CONNECTORS, SIM ACCESS

SIM Access	Internal
------------	----------

KEY FEATURES

- 7 years with single message cycle per day on fully charged batteries
- 57Ah lithium field replaceable battery pack
- IP67 sealed and rugged enclosure
- Packet data (GPRS, CDMA 1xRTT, or HSPA) and SMS-based messaging
- Internal cellular and GPS antennas
- Super Sensitive GPS (-162 dBm tracking)
- Built-in 3-axis accelerometer for motion sense
- Ultra low power sleep mode (<100µA)
- Voltage monitoring and low battery notification
- 2,000 buffered messages
- 10 built-in geo-fences
- Exception-based rules
- Automatic, over-the-air unit configuration on power-up
- Over-the-air firmware download
- Web-based device management

ThinAir Telematics LLC

5773 Woodway Dr #100, Houston, TX 77057, USA
T: (888) 285-8780
www.thinair.co

© 2017 ThinAir Telematics LLC

All specifications are typical and subject to change without notice

